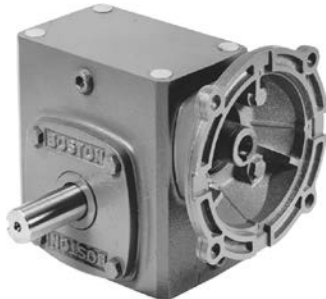


# 700 Series Worm Gear Product Reference Guide

## Single Reduction Flanged Reducers & Non-Flanged Reducers

A

Ordering Information – Page 14-15  
Selection/Rating Information – Pages 17, 22-33  
Lubrication – Page 20  
Motor Selection – Pages 339 & 348



**F700 BASIC**  
Dimensions — Page 34



**QC700 BASIC**  
Dimensions — Page 34



**F/QC700B**  
Dimensions — Page 35



**F/QC700BRB**  
Dimensions — Page 37



**F/QC700C/D**  
Dimensions — Page 38



**HF/HQC/SF700**  
Dimensions — Page 35



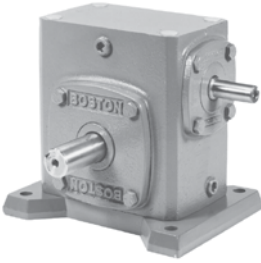
**HF/HQC-R/L + SF700V/W**  
Dimensions — Page 37



**700 BASIC**  
Dimensions — Page 38

# 700 Series Worm Gear Speed Reducers

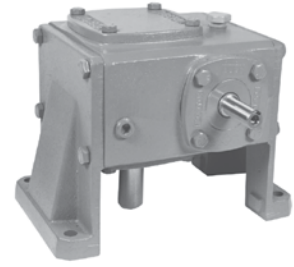
A



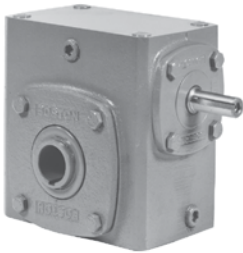
**700B**  
Dimensions — Page 45



**700A**  
Dimensions — Page 46



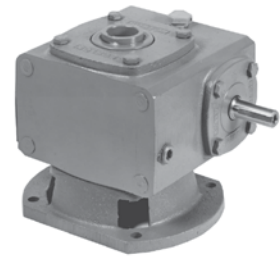
**700C/D**  
Dimensions — Page 47



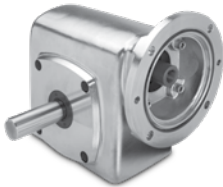
**H/S700**  
Dimensions — Pages 49



**H700R/L**  
Dimensions — Page 50



**S700V/W**  
Dimensions — Page 52



**SSF700**  
Dimensions — Page 59



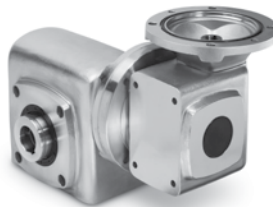
**SSH700**  
Dimensions — Page 59



**SSH700V/W**  
Dimensions — Page 60



**SSH700WB**  
Dimensions — Page 62



**SSH700WD**  
Dimensions — Page 63



**SSFSP5**  
Dimensions — Page 66