



Dynaline Flexible Shaft Couplings



Why Choose Guardian?

For more than 70 years, Guardian has been designing and manufacturing world-class couplings and other power transmission components. Utilizing advanced manufacturing technologies and processes, Guardian provides highly-reliable coupling and component solutions to meet the most challenging industrial application requirements.

Guardian provides a wide range of standard and custom products including flywheel couplings, hydraulic pump mounts, bearing supported stub shafts, flexible shaft-to-shaft couplings, motion control couplings as well as compression pipe couplings.

Durable Guardian products are utilized in key industries including mobile hydraulics, farm & ag, tree care, concrete, food & beverage, material handling, automation, power generation, and oil & gas on applications such as skid steers, aerial lifts, harvesters, wood chippers, concrete pumps, dewatering pumps, baggage handlers, conveyors, robotics, compressors, and generator sets.



DYNALINE FLEXIBLE SHAFT COUPLINGS

Available in 4 sizes, the Dynaline is a single piece rubber-in-shear coupling. These couplings are used in sub-fractional thru 3HP applications, with torque ratings up to 54 IN-LBS. End fittings are made from zinc die castings, and are crimped to the rubber sleeve. Bore sizes up to 3/4" (19mm). The coupling length can be varied to suit many applications.

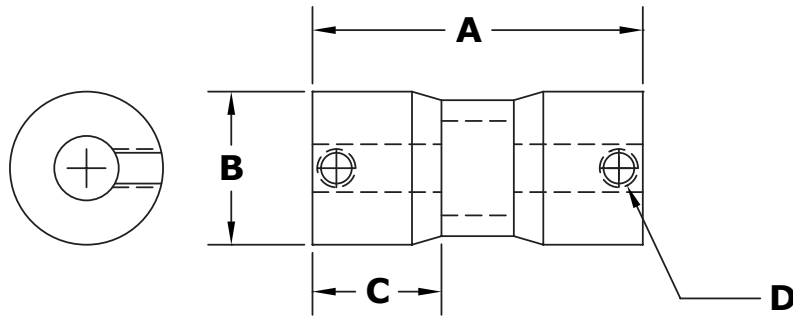


FEATURES & ADVANTAGES

- One-piece construction - No assembly, no wearing surfaces, easier installation.
- Corrosion-resistant end fittings are crimped to a neoprene sleeve to provide a maintenance free and longer life in difficult environments.
- Added length provides maximum angular and parallel misalignment. No need to align driver to driven components.
- Length to customer requirements.
- Neoprene sleeve provides a vibration free coupling which absorbs the shock of start-stop applications and peak overloads.
- Special designs or modifications engineered for the O.E.M. application

TO ORDER:

Specify overall length (A), both bore sizes (see below) and keyways if required.



Inches

Bore Range	Keyseat
3/8" to 1/2"	1/8" x 1/16"
5/8" to 7/8"	3/16" x 3/32"

Millimeters

Bore Range	Keyseat
6-7-8 mm	2 mm
9-10 mm	3 mm
11-12 mm	4 mm
13 thru 17 mm	5 mm
18 thru 22 mm	6 mm

Coupling Torque Ratings

Series Number	HP @ 3450 RPM	HP @ 1750 RPM	Nominal Torque in. lbs.	Standard Length	Motor Frame Size	Maximum Bore Size
1D	1/2	1/3	12	2-1/4"	48	1/2"
2D	1	1/2	18	2-1/2"	48	1/2"
3D	1-1/2	3/4	27	3"	56	5/8"
4D	3	1-1/2	54	3"	56 w/ Key	3/4"

Coupling Dimensions

Size	"A" Length		Length		B Diameter		C End Fitting		D Set Screws
	Minimum	(mm)	Maximum	(mm)		(mm)		(mm)	
1D	1-5/8"	(40 mm)	6"	(150 mm)	1	(25 mm)	11/16"	(18 mm)	1/4-20
2D	2-7/32"	(56 mm)	10"	(250 mm)	1-3/16"	(30 mm)	1"	(25 mm)	5/16-18
3D	2"	(50 mm)	10"	(250 mm)	1-9/32"	(33 mm)	1"	(25 mm)	5/16-18
4D	2-3/8"	(60 mm)	10"	(250 mm)	1-7/16"	(37 mm)	1-1/4"	(32 mm)	5/16-18

Length to customer's requirements, consult factory for high service factor ratings and effect of longer length. Metric set screws available.

Bore Specifications

Std. Finished Bores	1D	2D	3D	4D
Inches	1/4", 5/16", 3/8", 7/16", 1/2"	1/4", 5/16", 3/8", 7/16", 1/2"	5/16", 3/8", 7/16", 1/2", 9/16", 5/8"	7/16", 1/2", 9/16", 5/8", 3/4"
Metric	8-10-12 mm	8-10-12 mm	10-12-14-16 mm	14-16-18-20 mm
Max. Bore With Keyway	3/8" (10 mm)	3/8" (10 mm)	1/2" (12 mm)	5/8" (16 mm)

Guardian Couplings Facilities

North America

USA

300 Indiana Highway 212
Michigan City, IN 46360
219-874-5248

Engineered Flywheel Couplings, Engine Housings and Pump Mounts, Flexible Shaft Couplings

Europe

United Kingdom

Merchant Drive, Hertford
Hertfordshire SG13 7BL - England
+44(0)1992 501900

Engineered Flywheel Couplings, Engine Housings and Pump Mounts, Flexible Shaft Couplings

The Brands of Altra Motion

Couplings

Ameridrives
www.ameridrives.com

Bibby Turboflex
www.bibbyturboflex.com

Guardian Couplings
www.guardiancouplings.com

Huco
www.huco.com

Lamiflex Couplings
www.lamiflexcouplings.com

Stromag
www.stromag.com

TB Wood's
www.tbwoods.com

Linear Systems

Thomson
www.thomsonlinear.com

Warner Linear
www.warnerlinear.com

Geared Cam Limit Switches

Stromag
www.stromag.com

Engineered Bearing Assemblies

Kilian
www.kilianbearings.com

Electric Clutches & Brakes

Matrix
www.matrix-international.com

Stromag
www.stromag.com

Warner Electric
www.warnerelectric.com

Deltran
www.thomsonlinear.com

Belted Drives

TB Wood's
www.tbwoods.com

Heavy Duty Clutches & Brakes

Twiflex
www.twiflex.com

Stromag
www.stromag.com

Svendborg Brakes
www.svendborg-brakes.com

Wichita Clutch
www.wichitaclutch.com

Gearing & Specialty Components

Bauer Gear Motor
www.bauergears.com

Boston Gear
www.bostongear.com

Delevan
www.delevan.com

Delroyd Worm Gear
www.delroyd.com

Nuttall Gear
www.nuttallgear.com

Engine Braking Systems

Jacobs Vehicle Systems
www.jacobsvehiclesystems.com

Precision Motors & Automation

Kollmorgen
www.kollmorgen.com

Miniature Motors

Portescap
www.portescap.com

Overrunning Clutches

Formsprag Clutch
www.formsprag.com

Marland Clutch
www.marland.com

Stieber
www.stieberclutch.com

Neither the accuracy nor completeness of the information contained in this publication is guaranteed by the company and may be subject to change in its sole discretion. The operating and performance characteristics of these products may vary depending on the application, installation, operating conditions and environmental factors. The company's terms and conditions of sale can be viewed at <http://www.altramotion.com/terms-and-conditions/sales-terms-and-conditions>. These terms and conditions apply to any person who may buy, acquire or use a product referred to herein, including any person who buys from a licensed distributor of these branded products.

©2019 by Guardian Couplings LLC. All rights reserved. All trademarks in this publication are the sole and exclusive property of Guardian Couplings LLC or one of its affiliated companies.