



## Dynaline Flexible Shaft Couplings



## Why Choose Guardian?

For more than 70 years, Guardian has been designing and manufacturing world-class couplings and other power transmission components. Utilizing advanced manufacturing technologies and processes, Guardian provides highly-reliable coupling and component solutions to meet the most challenging industrial application requirements.

Guardian provides a wide range of standard and custom products including flywheel couplings, hydraulic pump mounts, bearing supported stub shafts, flexible shaft-to-shaft couplings, motion control couplings as well as compression pipe couplings.

Durable Guardian products are utilized in key industries including mobile hydraulics, farm & ag, tree care, concrete, food & beverage, material handling, automation, power generation, and oil & gas on applications such as skid steers, aerial lifts, harvesters, wood chippers, concrete pumps, dewatering pumps, baggage handlers, conveyors, robotics, compressors, and generator sets.



## DYNALINE FLEXIBLE SHAFT COUPLINGS

Available in 4 sizes, the Dynaline is a single piece rubber-in-shear coupling. These couplings are used in sub-fractional thru 3HP applications, with torque ratings up to 54 IN-LBS. End fittings are made from zinc die castings, and are crimped to the rubber sleeve. Bore sizes up to 3/4" (19mm). The coupling length can be varied to suit many applications.



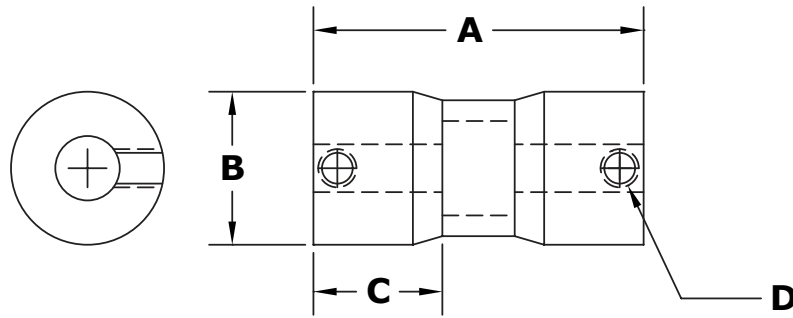
## FEATURES & ADVANTAGES

- One-piece construction - No assembly, no wearing surfaces, easier installation.
- Corrosion-resistant end fittings are crimped to a neoprene sleeve to provide a maintenance free and longer life in difficult environments.
- Added length provides maximum angular and parallel misalignment. No need to align driver to driven components.
- Length to customer requirements.
- Neoprene sleeve provides a vibration free coupling which absorbs the shock of start-stop applications and peak overloads.
- Special designs or modifications engineered for the O.E.M. application

## DIMENSIONS

TO ORDER:

Specify overall length (A), both bore sizes (see below) and keyways if required.



### Inches

Bore Range	Keyseat
3/8" to 1/2"	1/8" x 1/16"
5/8" to 7/8"	3/16" x 3/32"

### Millimeters

Bore Range	Keyseat
6-7-8 mm	2 mm
9-10 mm	3 mm
11-12 mm	4 mm
13 thru 17 mm	5 mm
18 thru 22 mm	6 mm

## Coupling Torque Ratings

Series Number	HP @ 3450 RPM	HP @ 1750 RPM	Nominal Torque in. lbs.	Standard Length	Motor Frame Size	Maximum Bore Size
1D	1/2	1/3	12	2-1/4"	48	1/2"
2D	1	1/2	18	2-1/2"	48	1/2"
3D	1-1/2	3/4	27	3"	56	5/8"
4D	3	1-1/2	54	3"	56 w/ Key	3/4"

## Coupling Dimensions

Size	"A" Length		Length		B Diameter		C End Fitting		D Set Screws
	Minimum		Minimum	Maximum					
1D	1-5/8"	(40 mm)	6"	(150 mm)	1	(25 mm)	11/16"	(18 mm)	1/4-20
2D	2-7/32"	(56 mm)	10"	(250 mm)	1-3/16"	(30 mm)	1"	(25 mm)	5/16-18
3D	2"	(50 mm)	10"	(250 mm)	1-9/32"	(33 mm)	1"	(25 mm)	5/16-18
4D	2-3/8"	(60 mm)	10"	(250 mm)	1-7/16"	(37 mm)	1-1/4"	(32 mm)	5/16-18

Length to customer's requirements, consult factory for high service factor ratings and effect of longer length. Metric set screws available.

## Bore Specifications

Std. Finished Bores	1D	2D	3D	4D
Inches	1/4", 5/16", 3/8", 7/16", 1/2"	1/4", 5/16", 3/8", 7/16", 1/2"	5/16", 3/8", 7/16", 1/2", 9/16", 5/8"	7/16", 1/2", 9/16", 5/8", 3/4"
Metric	8-10-12 mm	8-10-12 mm	10-12-14-16 mm	14-16-18-20 mm
Max. Bore With Keyway	3/8" (10 mm)	3/8" (10 mm)	1/2" (12 mm)	5/8" (16 mm)

## Guardian Couplings Facilities

### North America

#### USA

300 Indiana Highway 212  
Michigan City, IN 46360  
219-874-5248

*Engineered Flywheel Couplings, Engine Housings and Pump Mounts, Flexible Shaft Couplings*

### Europe

#### United Kingdom

Merchant Drive, Hertford  
Hertfordshire SG13 7BL - England  
+44(0)1992 501900

*Engineered Flywheel Couplings, Engine Housings and Pump Mounts, Flexible Shaft Couplings*

## The Brands of Altra Motion

### Couplings

**Ameridrives**  
[www.ameridrives.com](http://www.ameridrives.com)

**Bibby Turboflex**  
[www.bibbyturboflex.com](http://www.bibbyturboflex.com)

**Guardian Couplings**  
[www.guardiancouplings.com](http://www.guardiancouplings.com)

**Huco**  
[www.huco.com](http://www.huco.com)

**Lamiflex Couplings**  
[www.lamiflexcouplings.com](http://www.lamiflexcouplings.com)

**Stromag**  
[www.stromag.com](http://www.stromag.com)

**TB Wood's**  
[www.tbwoods.com](http://www.tbwoods.com)

### Linear Systems

**Thomson**  
[www.thomsonlinear.com](http://www.thomsonlinear.com)

**Warner Linear**  
[www.warnerlinear.com](http://www.warnerlinear.com)

### Geared Cam Limit Switches

**Stromag**  
[www.stromag.com](http://www.stromag.com)

### Engineered Bearing Assemblies

**Kilian**  
[www.kilianbearings.com](http://www.kilianbearings.com)

### Electric Clutches & Brakes

**Matrix**  
[www.matrix-international.com](http://www.matrix-international.com)

**Stromag**  
[www.stromag.com](http://www.stromag.com)

**Warner Electric**  
[www.warnerelectric.com](http://www.warnerelectric.com)

**Deltran**  
[www.thomsonlinear.com](http://www.thomsonlinear.com)

### Belted Drives

**TB Wood's**  
[www.tbwoods.com](http://www.tbwoods.com)

### Heavy Duty Clutches & Brakes

**Twiflex**  
[www.twiflex.com](http://www.twiflex.com)

**Stromag**  
[www.stromag.com](http://www.stromag.com)

**Svendborg Brakes**  
[www.svendborg-brakes.com](http://www.svendborg-brakes.com)

**Wichita Clutch**  
[www.wichitaclutch.com](http://www.wichitaclutch.com)

### Gearing & Specialty Components

**Bauer Gear Motor**  
[www.bauergears.com](http://www.bauergears.com)

**Boston Gear**  
[www.bostongear.com](http://www.bostongear.com)

**Delevan**  
[www.delevan.com](http://www.delevan.com)

**Delroyd Worm Gear**  
[www.delroyd.com](http://www.delroyd.com)

**Nuttall Gear**  
[www.nuttallgear.com](http://www.nuttallgear.com)

### Engine Braking Systems

**Jacobs Vehicle Systems**  
[www.jacobsvehiclesystems.com](http://www.jacobsvehiclesystems.com)

### Precision Motors & Automation

**Kollmorgen**  
[www.kollmorgen.com](http://www.kollmorgen.com)

### Miniature Motors

**Portescap**  
[www.portescap.com](http://www.portescap.com)

### Overrunning Clutches

**Formsprag Clutch**  
[www.formsprag.com](http://www.formsprag.com)

**Marland Clutch**  
[www.marland.com](http://www.marland.com)

**Stieber**  
[www.stieberclutch.com](http://www.stieberclutch.com)

Neither the accuracy nor completeness of the information contained in this publication is guaranteed by the company and may be subject to change in its sole discretion. The operating and performance characteristics of these products may vary depending on the application, installation, operating conditions and environmental factors. The company's terms and conditions of sale can be viewed at <http://www.altramotion.com/terms-and-conditions/sales-terms-and-conditions>. These terms and conditions apply to any person who may buy, acquire or use a product referred to herein, including any person who buys from a licensed distributor of these branded products.

©2019 by Guardian Couplings LLC. All rights reserved. All trademarks in this publication are the sole and exclusive property of Guardian Couplings LLC or one of its affiliated companies.

