

Industrial Brakes

**NEW**

# SIDEOS One

Module of Speed Monitoring

**SIDEOS One is a module that monitors the hoisting speed, it ensures the safety of people and equipment**

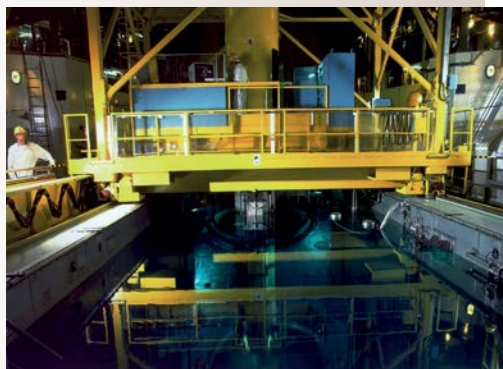
By processing the data of an incremental encoder, SIDEOS One module protects the installation from any risks of overspeed. Its independent system of internal control allows it to detect and record all the faults (encoder, board and output contactors). SIDEOS One can be combined with Stromag limit switches with encoder.

### Applications

- Steel Industry
- Port Applications
- Mass Transport
- Nuclear Cranes

### Benefits

- Compliance with the directives: low voltage, EMC, machine security PL= d to e.
- Independent and complete solution: easy use.
- In case of overspeed detection, controls the emergency brakes closing.
- Self-control system: displays all internal and external faults.
- Tests all its functions at the switching on or after a restart.
- Controls the overspeed function every "n" tops of the encoder.
- Allows the monitoring of the non-slipping of the load at stop.
- Enables communication between 2 SIDEOS One for detection of a kinematic linkage break.
- LCD display: speed reading, setting, display of the faults detected, display of the orders given to SIDEOS One.



**SIDEOS One**

Programmable and secure module for speed monitoring, fitted with an efficient auto control system (DC>99%) which secures the overall operation of the overspeed detection system.

**Conform to the machine security standards:**

NF EN ISO 13489-1  
 Performance level PL=d to PL=e  
 Category : 2 to 4 MTTFd = high DC = high

**EC marking of conformity:**

- 2006/42/EC directive Machine
- 2006/95/EC Low voltage directive (standard NF EN 60204-1)
- 2004/108/EC EMC directive (standards NF EN 61000-6-2, NF EN 61000-6-4)

**Operating conditions:**

- Ambient temperature: -20°C to +60°C
- IP65 protected electrical casing

**Electrical data:**

- 1 available version  
 AC : 115/230 V AC ± 10% 50/60Hz
- Other voltages: consult us

**Options:**

- Steel casing IP66 IK10
- Anti-condensation kit

