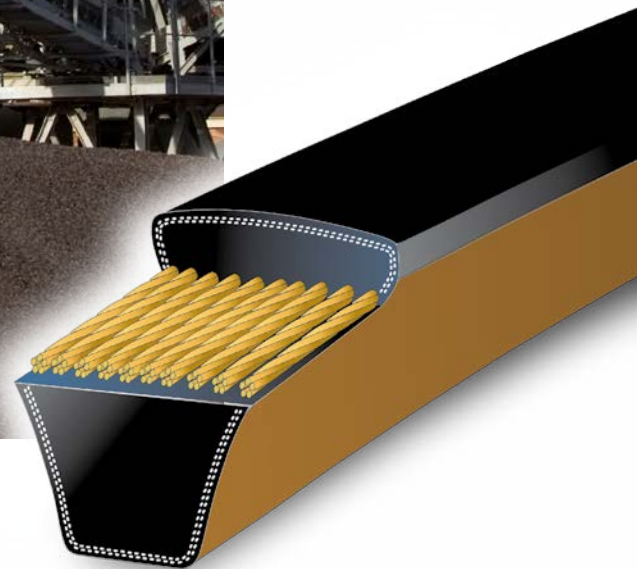




**Premium  
Belt Drive  
System  
for  
Tough  
Applications**





TB Wood's Premium belt drives are designed for use in a variety of industries such as:

- Agriculture
- Forestry
- Mining
- Construction
- Oil Fields
- Pulp & Paper
- Lumber
- Manufacturing

These high performance drive systems are specifically designed for tough applications including:

- Crushers
- De-barkers
- Hogs
- Grinders
- Wood hogs
- Pallet grinders
- Shredders
- Tub grinders
- Auto shredders
- Conveyors
- Shaker screens
- Band Saws

## PREMIUM V-BELTS COMBINED WITH HIGH TENSILE, CAST IRON SHEAVES PROVIDE EXCEPTIONAL PERFORMANCE IN AGGRESSIVE APPLICATIONS

Premium belts have the highest power density of any V-belt, and stretch dramatically less than standard cross sections. That's why they're ideal for use on problem drives requiring high-impact strength and load-carrying power.

### Premium Banded Belts

Replaces several belts with the strength of a single belt. Banded belts feature a multiple layer tie band that provides excellent lateral rigidity to prevent belts from turning over or from coming off of the drive.

### Premium Singles

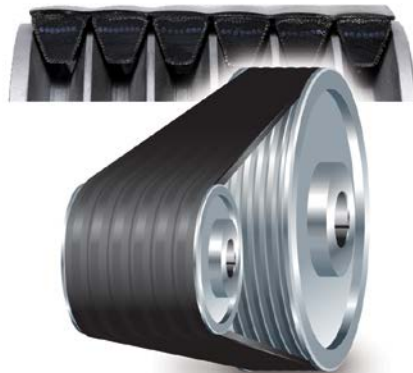
For applications when banded belts are not an option. Single belts can be used with deep groove sheaves and drives with limited room for "take up". They can also be an "A" section solution for multi-groove A/B sheaves.

## The Premium Advantage

Premium V-belts can handle 1.4 to 2.2 times more horsepower than the equivalent size standard V-belt. So you can design a more compact drive that weighs less, puts less strain on costlier components, and uses fewer belts as shown in the following example.

### Standard

6 Strand 5V drive; Rated HP/Strand: 32.9  
Total weight: 265 lbs.



### Premium

3 Strand 5VP drive; Rated HP/Strand: 66.8  
Total weight: 153 lbs



**Check out the eCatalog at [www.tbwoods.com](http://www.tbwoods.com) for complete belt and sheave product availability.**



## The Premium Belt Difference is in the Construction

### “Clutching” non-rubber surfaced cover

Allows momentary slippage due to excessive overloads without burning belts up

### KEVLAR® or aramid tensile cords

Give extraordinary strength, durability and virtually zero stretch

### Virtually zero stretch

Eliminates the need for constant belt re-tensioning

### Chloroprene rubber compounds

Provide superb oil and heat resistance

### Specially-treated extra tough cover

Withstands slip and shear forces at peak loads without generating excessive heat; fends off penetration by foreign materials

### Curve design

Compensate for effects such as sidewall bulge, which occur when belts bend around a sheave. This yields uniform loading, giving maximum belt life and even wear on the sheave sidewalls (eliminates dishing)

### Double fabric cover

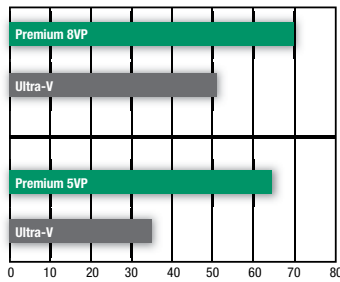
Creates maximum abrasion resistance that protects against wear caused by fine airborne dust in rock quarries and lumber mills, which can cause rapid belt sidewall wear resulting in early failures

### Over 20-50 percent more horsepower than standard V-Belts

Enables new equipment designers to utilize the full load-carrying capacity of these high-performance belts



### Horsepower Rating Comparison



Rated horsepower per belt at 1750 rpm, 12.5" diameter

### Premium Cross Sections

		Available today in:	Custom to:
Premium Banded Belts	3VP	21 Lengths	10 Strands
	5VP 8VP	32 Lengths 31 Lengths	16 Strands 12 Strands
Premium Singles	5VP	26 Lengths	
	8VP	15 Lengths	
	APR	29 Lengths	
	BPR CPR	49 Lengths 15 Lengths	

## Select High-Performance TB Wood's Sheaves to Get the Most From Your Drive System

When incorporating TB Wood's Premium V-belts, it is important to evaluate the load capacity of existing or specified sheaves. The exceptional strength of Premium belts, combined with tough application environments, may require extra heavy-duty sheaves that can meet the challenge. TB Wood's can design and manufacture a full array of sheaves to meet the specific needs of your application.

- Carefully engineered to assure maximum performance over a long life span
- Constructed of fine grain, high tensile cast iron
- Capacities up to 600 HP from stock
- Bore sizes from 1/2 to 8-1/2 inches
- For use with single or banded V-belts with wrapped construction
- Significant inventory in place to cover most applications
- Application engineer expertise

\*KEVLAR® is a registered trademark of Dupont™



## TB Wood's Facilities

### North America

#### USA

440 North Fifth Avenue  
Chambersburg, PA 17201 - USA  
888-829-6637 \* 717-264-7161

*Belted Drives and Elastomeric Couplings*

#### Customer Service

1-888-829-6637 (Press #5)

#### For Application Support

1-888-829-6637 (Press #7)

2000 Clovis Barker Road  
San Marcos, TX 78666 - USA  
1-888-449-9439

*General Purpose Disc Couplings*

#### Customer Service

1-888-449-9439

4970 Joule St  
Reno, NV 89502 - USA  
775-857-1800

#### Canada

9779 45 Ave NW  
Edmonton, AB T6E 5V8 - Canada  
+1 780-439-7979

6305 Danville Road  
Mississauga, ON L5T 2H7 - Canada  
1-800-829-6631

1073 Rue Bégin  
Saint-Laurent, QC H4R 1V8 - Canada  
+1 514-332-4812

#### Mexico

Comisión Federal de Electricidad 850,  
Industrial San Luis,  
San Luis, S.L.P., 78395 - Mexico  
+52 444 137 1500

### Europe

Merchant Drive, Hertford  
Hertfordshire SG13 7BL - England  
+44(0)1992 501900

*Elastomeric Couplings*

## The Brands of Altra Industrial Motion

### Couplings

**Ameridrives**  
[www.ameridrives.com](http://www.ameridrives.com)

**Bibby Turboflex**  
[www.bibbyturboflex.com](http://www.bibbyturboflex.com)

**Guardian Couplings**  
[www.guardiancouplings.com](http://www.guardiancouplings.com)

**Huco**  
[www.huco.com](http://www.huco.com)

**Lamiflex Couplings**  
[www.lamiflexcouplings.com](http://www.lamiflexcouplings.com)

**Stromag**  
[www.stromag.com](http://www.stromag.com)

**TB Wood's**  
[www.tbwoods.com](http://www.tbwoods.com)

### Gear Cam Limit Switches

**Stromag**  
[www.stromag.com](http://www.stromag.com)

### Electric Clutches & Brakes

**Inertia Dynamics**  
[www.idicb.com](http://www.idicb.com)

**Matrix**  
[www.matrix-international.com](http://www.matrix-international.com)

**Stromag**  
[www.stromag.com](http://www.stromag.com)

**Warner Electric**  
[www.warnerelectric.com](http://www.warnerelectric.com)

### Linear Products

**Warner Linear**  
[www.warnerlinear.com](http://www.warnerlinear.com)

### Engineered Bearing Assemblies

**Kilian**  
[www.kilianbearings.com](http://www.kilianbearings.com)

### Heavy Duty Clutches & Brakes

**Industrial Clutch**  
[www.indclutch.com](http://www.indclutch.com)

**Twiflex**  
[www.twiflex.com](http://www.twiflex.com)

**Stromag**  
[www.stromag.com](http://www.stromag.com)

**Svendborg Brakes**  
[www.svendborg-brakes.com](http://www.svendborg-brakes.com)

**Wichita Clutch**  
[www.wichitaclutch.com](http://www.wichitaclutch.com)

### Belted Drives

**TB Wood's**  
[www.tbwoods.com](http://www.tbwoods.com)

### Gearing

**Bauer Gear Motor**  
[www.bauergears.com](http://www.bauergears.com)

**Boston Gear**  
[www.bostongear.com](http://www.bostongear.com)

**Delroyd Worm Gear**  
[www.delroyd.com](http://www.delroyd.com)

**Nuttall Gear**  
[www.nuttallgear.com](http://www.nuttallgear.com)

### Overrunning Clutches

**Formsprag Clutch**  
[www.formsprag.com](http://www.formsprag.com)

**Marland Clutch**  
[www.marland.com](http://www.marland.com)

**Stieber**  
[www.stieberclutch.com](http://www.stieberclutch.com)

Neither the accuracy nor completeness of the information contained in this publication is guaranteed by the company and may be subject to change in its sole discretion. The operating and performance characteristics of these products may vary depending on the application, installation, operating conditions and environmental factors. The company's terms and conditions of sale can be viewed at <http://www.altramotion.com/terms-and-conditions/sales-terms-and-conditions>. These terms and conditions apply to any person who may buy, acquire or use a product referred to herein, including any person who buys from a licensed distributor of these branded products.

©2018 by TB Wood's LLC. All rights reserved. All trademarks in this publication are the sole and exclusive property of TB Wood's LLC or one of its affiliated companies.