

Ameridrives

Bauer Gear Motor

Bibby Turboflex

Boston Gear

Delevan

Delroyd Worm Gear

Deltran

Formsprag Clutch

Guardian Couplings

Huco

Jacobs Vehicle Systems

Kilian

Kollmorgen

Lamiflex Couplings

Marland Clutch

Matrix

Nuttall Gear

Portescap

Stieber

Stromag

Svendborg Brakes

TB Wood's

Thomson

Twiflex

Warner Electric

Warner Linear

Wichita Clutch

Excerpted From

Using Couplings to Reduce Downtime



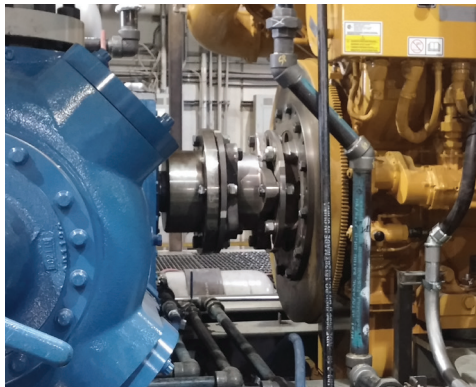
As seen in
Power Transmission Engineering
August, 2019



Excerpted From

Using Couplings to Reduce Downtime

by Joseph L. Hazelton
Contributing Editor



Depending on the application, a coupling's weight may be a fraction of a driveline's overall weight or may be the bulk of that weight. This coupling connects an engine and a compressor.

Downtime, downtime, downtime. When it's planned, it's bearable. When it's not, it's not.

To maintain machinery, planned downtime is necessary. To fix broken equipment, unplanned downtime is excruciating, especially when your factory is running closer and closer to full capacity.

Now, the effort to reduce downtime, planned and unplanned, is ongoing in industry. However, in that effort, some companies are paying more and more attention today to the couplings on their drivelines. This tendency has been noticed by some manufacturers of couplings.

And what's being done with couplings to reduce downtime?

In heavy industry – that is, in heavy-duty, high-speed applications – two trends are 1) to remove a type of coupling and replace it with another type and 2) to reduce a coupling's weight in order to reduce possible imbalance.

Complications of a Switch

A switch from one type of coupling to another type can get real complicated real fast. One complicating factor can be whether the driveline is powered by an engine or a motor. This factor is explained by John Malik.

Malik is general manager for TB Wood's and Ameridrives couplings in San Marcos, TX. TB Wood's and Ameridrives are two brands of couplings made by Altra Industrial Motion Corp., Braintree, MA. Altra makes couplings for a number of heavy industries, including metal processing, mining, and oil and gas.

According to Malik, a switch involving a line with an engine can require more upfront engineering work to understand whether the line would need to be changed or how it would need to be changed in order to make the switch.

As an example, he mentions a switch from a type of coupling that's high maintenance to a type that's low maintenance. "The weight, the inertia, the stiffness," he says, "all might be different and that's going to affect the machinery dynamics, so you've got to be careful."

Tradeoffs: Finding the Right Mix

Of course, a switch between types of couplings will likely involve tradeoffs, losing an advantage here, gaining one there, losing a disadvantage here, "gaining" one there. What advantages you want and disadvantages you can accept, depend on what you figure is the best way to reduce downtime.

Now, a coupling that offers all the advantages you want, may exist today, but it's not likely. So, when you look into switching to another type of coupling, have your wish list at hand, but be ready to start prioritizing its items.

Also, be ready to be told some parameters don't go together. For example, Malik mentions that factories may request a coupling that's low maintenance or maintenance-free and that allows for higher misalignment. As he points out, those parameters are at odds with each other. The allowance for misalignment may be requested so the factory can keep down the time and cost of installation. But, if you have more misalignment: "You get more reaction force," Malik says.

He then adds an example to show the possible consequences of conflicting parameters. His example isn't heavy industry, but it does illustrate his point. The example is a turbine-powered generator mounted on a big truck for use as a mobile, auxiliary power unit.

Rather than use a high-performance coupling, the customer asked that the system use a universal joint to permit three degrees of misalignment. The u-joint may create a problem for the turbine, though.

Malik explains that generally, turbines are very precisely designed and have bearings designed to support a very light weight, very well-balanced coupling. The u-joint with three degrees of misalignment wouldn't be as well balanced as it should be. And a u-joint is generally much heavier than a high-performance coupling.

Given more weight and less balance: "You run the risk of tearing the bearings out of the equipment," Malik says. Depending on the machine system, a possible result could be a short life ending in catastrophic failure.

A Complicated Switch Due to a Sophisticated System

A switch can become more complicated when the whole machine system is more sophisticated or when the new type of coupling is being retrofitted onto an existing system. Malik offers a higher-end example: a turbine-powered system running a turbo-compressor at 5,000-plus rpm. Before switching the system's coupling, you'd need to figure the new coupling's effect on the system. "Now, you've got to rerun the machinery dynamic studies, whether it's torsional vibration analysis, lateral vibration," Malik says.

In such cases, a system's owner may need to hire a consultant who can take into account all of the system components in order to ensure that after the switch, the system still works as expected and now includes the benefits of the new type of coupling.

According to Malik, such consultants are limited in number because of the expense and expertise needed to buy and run the software that models complex machinery systems. Once hired, the consultant would look at the system components and contact the various component manufacturers as needed, working with them while tweaking the system's computer model in order to permit a switch in coupling. "It's a big team effort," Malik says.



Generally, switching from one type of coupling to another type becomes more complicated as the whole machine system becomes more complicated.

About Altra Industrial Motion

Altra is a leading global designer and manufacturer of quality power transmission and motion control products utilized on a wide variety of industrial drivetrain applications. Altra clutches and brakes, couplings, gearing and PT component product lines are marketed under the industries' most well known manufacturing brands. Each brand is committed to the guiding principles of operational excellence, continuous improvement and customer satisfaction. Highly engineered Altra solutions are sold in over 70 countries and utilized in a variety of major industrial markets, including food processing, material handling, packaging machinery, mining, energy, automotive, primary metals, turf and garden and many others.

Altra's leading brands include Ameridrives, Bauer Gear Motor, Bibby Turboflex, Boston Gear, Delevan, Delroyd Worm Gear, Deltran, Formsprag Clutch, Guardian Couplings, Huco, Jacobs Vehicle Systems, Kilian, Kollmorgen, Lamiflex Couplings, Marland Clutch, Matrix, Nuttall Gear, Portescap, Stieber, Stromag, Svendborg Brakes, TB Wood's, Thomson, Twiflex, Warner Electric, Warner Linear and Wichita Clutch.



449 Gardner Street
South Beloit, IL 61080
815-389-3771
815-389-2582 (fax)
www.AltraMotion.com

For a complete list of our
global sales offices visit:
altramotion.com/contactus