



#### Wind Turbine Applications

- Small (less than 50 kw) wind turbine
  - Yaw motor brake
  - Main rotor brake on generator
- Medium and large wind turbine
  - Yaw motor brake
  - Failsafe brake for service lift and personal hoist
  - Pitch motor brake

Warner Electric is a world leader in the design and manufacture of hydraulic, pneumatic and electromagnetic brakes and clutches.

We offer a full range of brakes and specialize in customized solutions to meet your specific performance and installation requirements.

We have over 60 years of experience delivering high technology, cost effective braking systems. We offer production, engineering and application support from our facilities in Europe, the U.S. and China.

Contact us today to discuss how our dedicated engineers can assist you.

For technical assistance call  
**Europe: +44 1356 60 2000**  
**US: +1 800-825-9050**

# PK Spring-Applied Motor Brake Captive Design

Electrically Released Brake  
for Wind Turbines

## Parking and stopping standard brake for wind turbines

The Pan-Cake Captive (PK Captive) range is a pre-assembled on/off dry failsafe electromagnetic brake. This failsafe brake is used for parking and emergency only. The brake uses a high coefficient of friction material and powerful coil to optimize torque in a low profile package. The coil can be linked with a pulse width modulation power supply to reduce power consumption and maintenance.

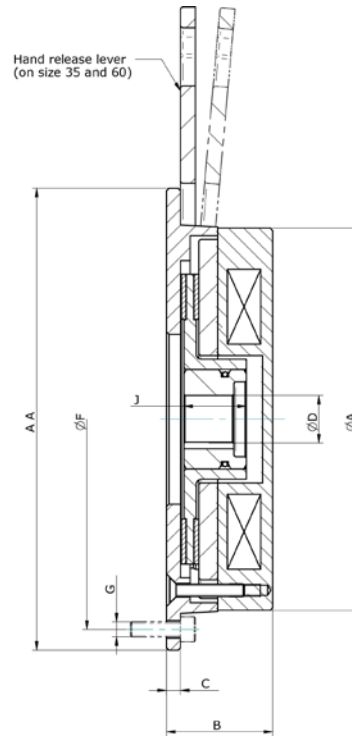
The benefits of this cost competitive range include; one piece design for easy assembly, lower power consumption, and overall lower maintenance costs.

- High torque within a compact space envelope
- Multi-step braking versions available
- Low profile space saving design
- Hand release on request
- IP67 on request
- High quality corrosion protection treatment



## PK Spring-Applied Motor Brake

# Electrically Released Brake



Size	10 Captive	35 Captive	60 Captive
Static Torque (Nm)	11	37	120
Static Torque (lb. ft)	8	27.1	88
A	109	153	168
B	42	43	67
C	4.6	5.6	–
D	15/20H7	19.05/20/25H7	20/25/30H7
J	20	25	45
F	90	168.3	152
G	3 × M5	4 × M6	3 × M8
AA	113	185	175
Hand Release	–	Available	Available
Ambient Temperature	Minus 20 Plus 60 Degree C		
Voltage	Pulse Width Modulation - based on customer requirements		
Connector	On request	On request	On request